

The background features a light blue top section with snowflakes and a light green bottom section with autumn leaves and acorns. The central text is in a dark blue, rounded font. The overall design is clean and modern with a seasonal theme.

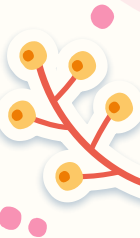
SEPAG Meeting

October 5, 2023

Dr. Dana Blair, Director

Agenda

- Introductions
- Norms and Information
- Upcoming Meetings/ Events
- Survey



Who I am

- Lifelong South Jersey Girl!
- Education
 - Teacher, School Administrator, Director, inclusive advocate
- Foodie, Workout Lover
- Experience
 - Undergraduate in Education
 - Graduate Degree in School Leadership
 - Doctorate in Curriculum and Instruction
 - Finishing Law School in December!



SEPAG Leadership

Nancy Sullivan



Nousheen Yousuf-Sadiq



Teacher Representatives

- Michelle Wojceichowski (Central)
- Tiffany Weiss (Haddon)
- Karen Amariti (Tatem)
- Lisa Everett (Middle)
- Rachel Flynn (High School)

What is SEPAG?

- A Special Education Parent Advisory Group, or SEPAG (sea-pag) is a state-mandated, district-level, parent-driven group charged with providing input to the district on system-level challenges in special education and related services.
- **New Jersey regulations require that:**
 - “Each district board of education shall ensure that a special education parent advisory group is in place in the district to provide input to the district on issues concerning students with disabilities.”
- A SEPAG can:
 - Increase the proactive involvement of families by inviting input that can be used to shape local special education policy; help improve educational outcomes and well-being for all students, including those with disabilities; help identify unmet needs; help shape the development of programs, services, and policies; and, improve district culture.
- Reference Guide [HERE](#)

Mission

- *Our mission is to support the special needs of students and their families by giving input on policy and programs to ensure a high quality, free and appropriate public education for all students.*

What is SEPAG

SEPAG IS

- A part of the local school district, not a private or independent group.
- By definition, is parent-driven, and often parent-led
- Advisory group that addresses system-level challenges affecting students with disabilities and their families
- For School Community, Parents, and District Staff/Leadership

SEPAG IS NOT:

- About individual students or concerns
- Dedicated to addressing a single issue or immediate concern;
- An advocacy assistance group, which focuses on upholding rights for children and advocating for change from outside the system
- Special Education PTO or PTA, which might plan carnivals, classroom activities, dances, fundraisers, or other events.

Survey

- Please fill out the Survey [HERE](#)
- This will allow SEPAG and the district to understand
 - Our goals
 - Upcoming plans and meetings
 - Future training
 - Future steps

Upcoming Events/Meetings

Our next meeting will be November 30th at 7pm

- Depending on Survey we may rotate times
- They will be both virtual and in person
- Typically about 4 a year

Events

- Inclusive Schools Week in December!
- Parent Academies
- Disabilities Awareness Month (April)